

## Frontier Weather Product Pricing

Frontier Weather subscribers can choose which products they want access to, and then only pay for access to those specific products. Pricing will vary depending on the number of users, and the products chosen, but discounts are given for subscribing to multiple products as well as pre-paying for an entire one year subscription in advance. If paying monthly, subscriptions can be cancelled at any time with 30 day notice otherwise can be cancelled at the end of each subscription period.

Please call us at 918-252-7791 or email us at [sstrum@frontierweather.com](mailto:sstrum@frontierweather.com) for the latest price quotes.

### Free 30-Day Trials

You can view all of the available weather reports and data files on the Frontier Weather website free for 30 days. If a trial user name and password is not included with this brochure, please call us at 918-252-7791 or email us at [sstrum@frontierweather.com](mailto:sstrum@frontierweather.com) to set up your free trial.



# Frontier Weather

6140 S. 104th East Ave.  
Suite 300  
Tulsa, OK 74133

Phone: (918) 252-7791  
Fax: (866) 892-8521

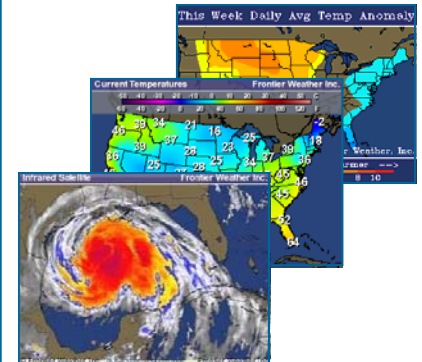
E-mail: [sstrum@frontierweather.com](mailto:sstrum@frontierweather.com)

[www.frontierweather.com](http://www.frontierweather.com)

# Frontier Weather

## ENERGY WEATHER SERVICES

*Improve your decision making  
with energy weather data!*



- **HDD & CDD** data and forecasts
- **Tropical Weather** forecasts
- **Hourly, Daily, Weekly, and Monthly** weather forecasts
- **Customized forecast services**
- **Free Trials!**

Phone: (918) 252-7791  
[www.frontierweather.com](http://www.frontierweather.com)

## HOURLY TO SEASONAL

Frontier Weather produces a wide range of forecast products ranging from hourly weather forecasts out to 7 days to seasonal forecasts out to 9 months:

- **Daily weather forecasts** out to 15 days for >200 U.S. cities
- **7 day hourly weather forecasts** for ~100 U.S. cities
- Historical and forecast Heating and Cooling Degree Days (**HDDs & CDDs**)
- Graphical **2-5, 6-10, 11-15 day forecasts** plus discussions updated twice daily
- **Seasonal forecasts** out to 9 months including site-specific weather forecasts
- **Tropical Weather Updates** issued multiple times per day during hurricane season
- **Custom wind forecasts** tailored to the wind power industry can be produced in a variety of formats for any location needed. See our Wind Forecasting brochure for more information.

A wide range of additional forecast products are available on the Frontier Weather website.

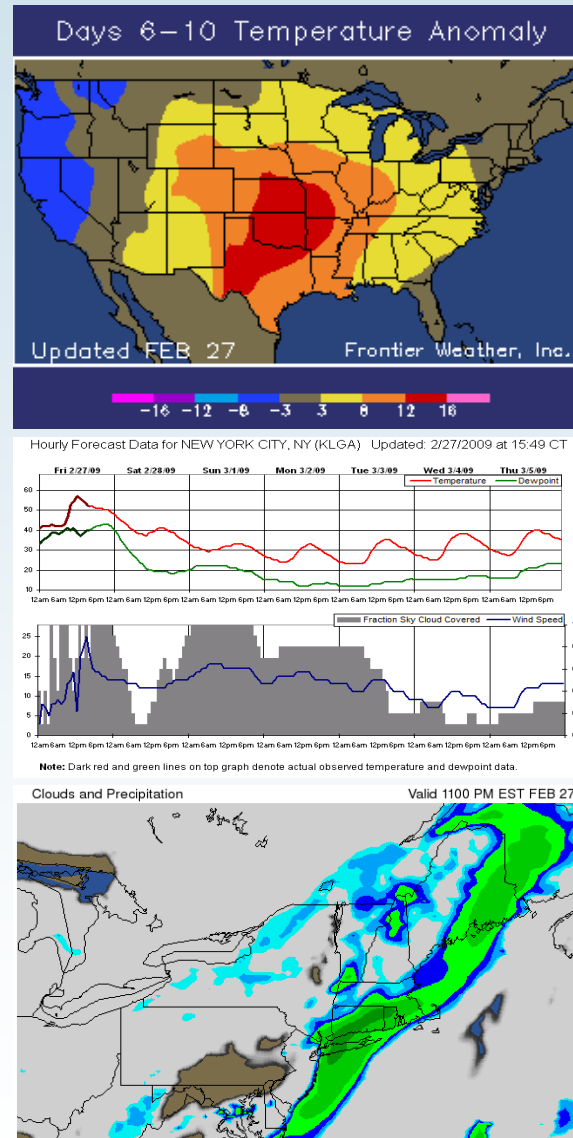
## DATA ACCESS

Frontier Weather issues several weather reports each morning and again at midday that are available on the Frontier Weather website as well as through email distribution.

Data products, such as hourly or daily historical and forecast data files are available for download on the Frontier Weather website, and can also be accessed through FTP. All data products are available in formats that can be imported directly into spreadsheets and databases for use in gas and power load models or other applications.

## HOURLY & DAILY EXAMPLES

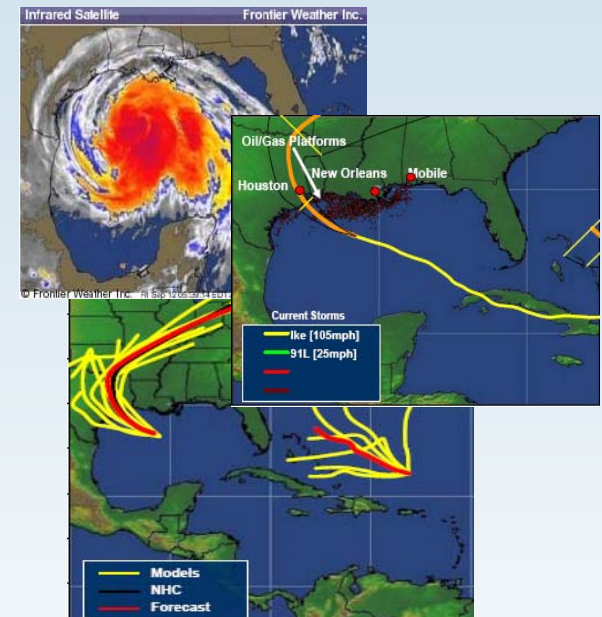
A variety of graphical hourly and daily weather products are available in addition to our reports and text data products.



(Top) Temperature anomaly forecasts for the 6-10 day time frame. (Middle) Hourly temperature, dewpoint, wind speed, and cloud cover forecasts for the next 7 days. (Bottom) Forecast cloud cover and precipitation.

## TROPICAL WEATHER PRODUCTS

Frontier Weather distributes tropical weather updates throughout the day during hurricane season which include a summary of current and potential future storms, model forecast tracks, and other important information.



## OTHER FEATURES

Besides the regular suite of weather reports and related online graphics, a variety of other interactive tools are available to subscribers including:

- U.S. and global temperature anomaly maps from several global forecast models.
- Current and historical weather map viewers.
- Weekly historical and forecast temperature and degree day anomaly viewer.
- City-specific seasonal forecast viewer that allows for comparison to previous years along with monthly degree day total projections.