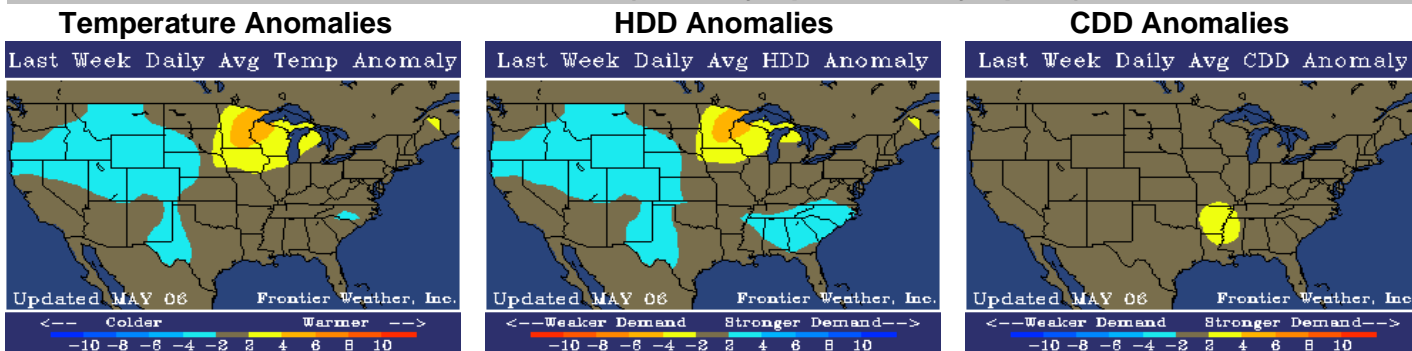
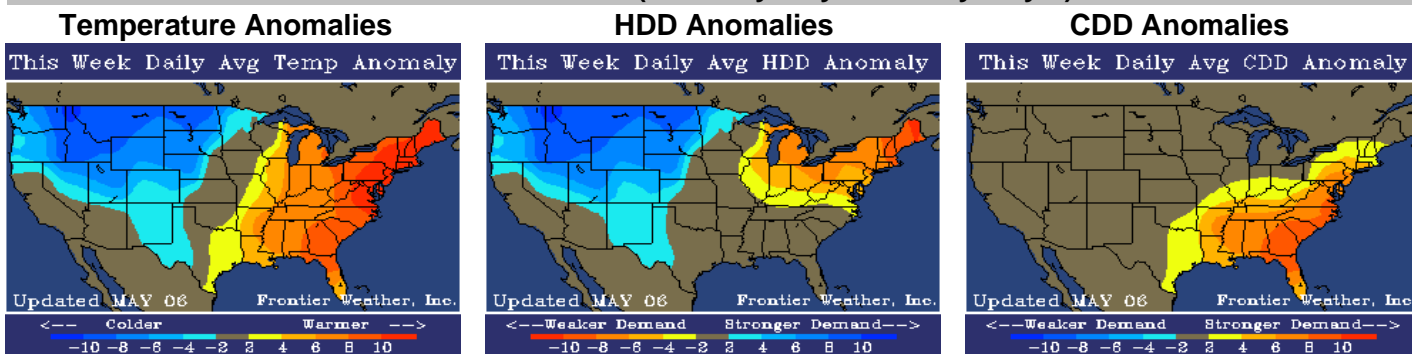


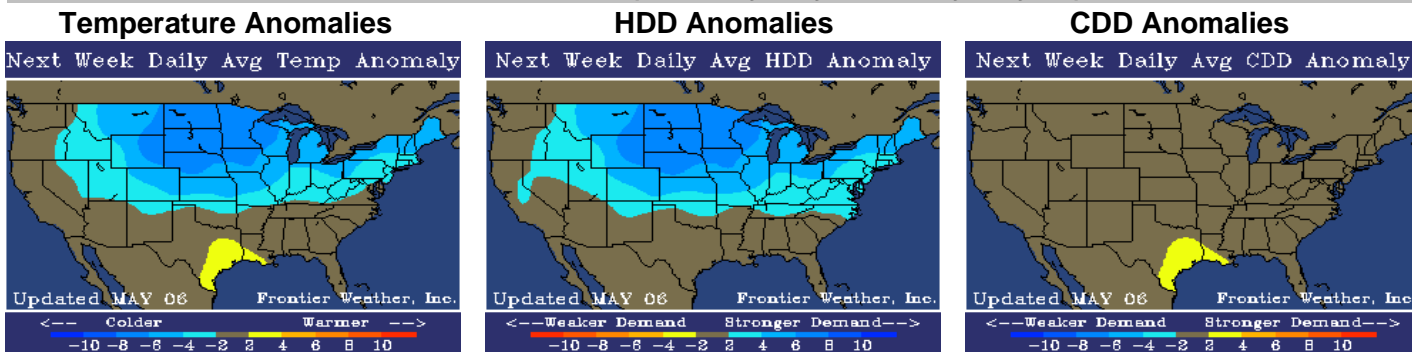
Last Week's Anomalies (Saturday Apr 24 - Friday Apr 30)



This Week's Anomalies (Saturday May 1 - Friday May 7)



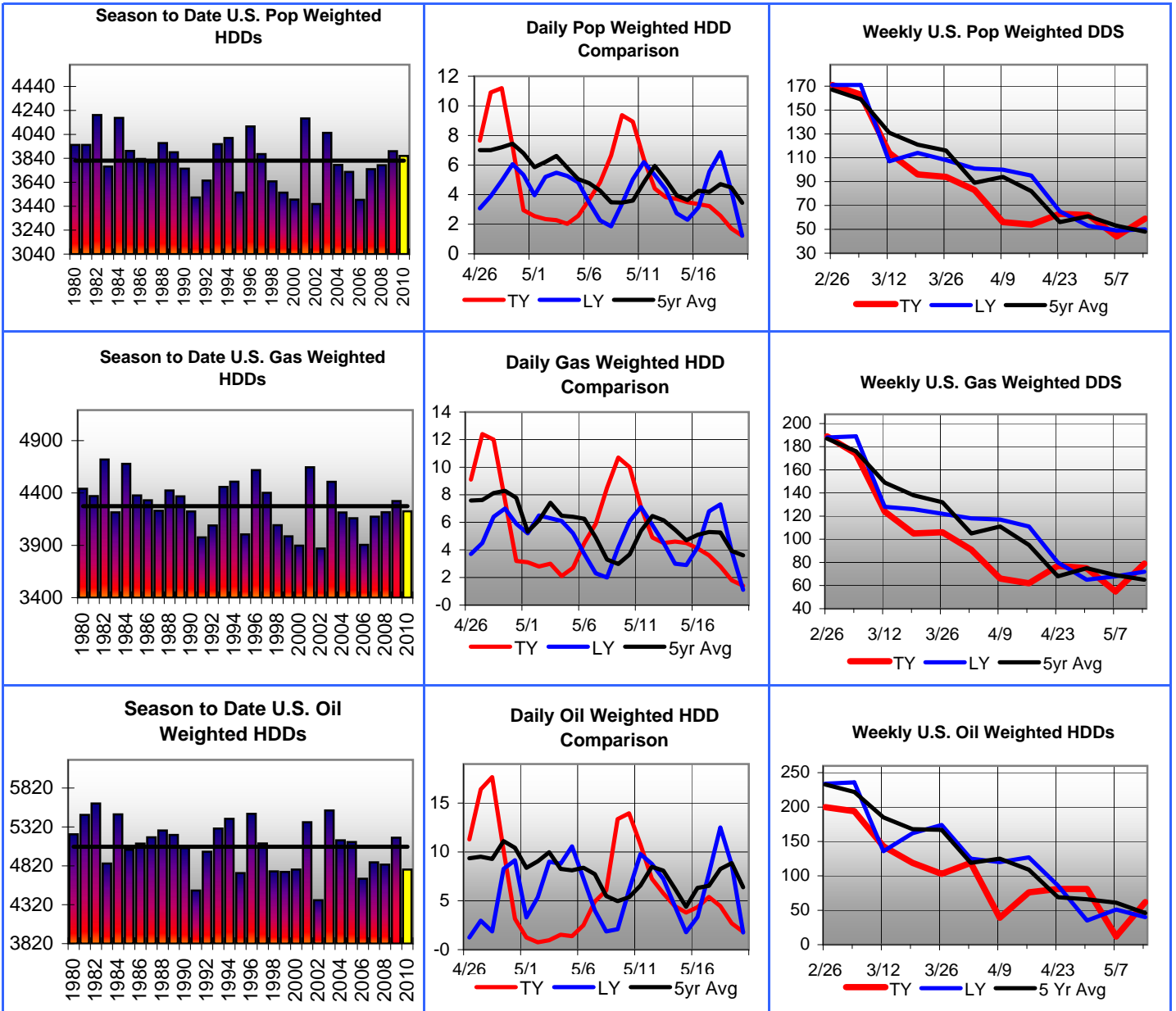
Next Week's Anomalies (Saturday May 8 - Friday May 14)



Weekly Population, Gas, and Heating Oil Weighted Degree Day Totals

Week Ending*	Wkly Pop Weighted DD Totals			Wkly Gas Weighted DD Totals			Wkly Oil Weighted HDD Totals		
	This Year	Last Year	5yr Avg	This Year	Last Year	5yr Avg	This Year	Last Year	5yr Avg
2/26/2010	171	171	167	189	188	187	200	234	233
3/5/2010	163	171	159	174	189	176	194	236	222
3/12/2010	114	107	131	124	128	149	143	136	185
3/19/2010	96	114	121	105	126	138	119	162	168
3/26/2010	94	108	116	106	122	132	103	174	167
4/2/2010	83	101	89	91	118	105	119	125	119
4/9/2010	56	100	94	66	117	111	39	120	125
4/16/2010	54	95	82	62	111	95	76	127	109
4/23/2010	63	65	56	77	80	68	81	86	69
4/30/2010	62	53	61	75	65	75	81	35	66
5/7/2010	44	49	53	55	68	69	12	51	61
5/14/2010	59	50	48	79	72	65	62	40	46

* Weekly totals are an average of the week ending Thursday total and the week ending Friday total.



City Specific Season to Date Degree Day Information

City	STD HDDs		Norm HDD	% Normal	
	09/10	08/09		09/10	08/09
Atlanta	3201	2691	2762	116%	97%
Boston	4945	5435	5341	93%	102%
Chicago	5798	6397	6200	94%	103%
Dallas	2580	1870	2358	109%	79%
Houston	1768	1159	1522	116%	76%
Indianapolis	5111	5149	5343	96%	96%
Kansas City	5161	5089	5179	100%	98%
L.A.	797	820	863	92%	95%

City	STD HDDs		Norm HDD	% Normal	
	09/10	08/09		09/10	08/09
Minneapolis	6824	7582	7593	90%	100%
New Orleans	1727	1056	1380	125%	77%
New York	4114	4598	4600	89%	100%
Philly	4214	4560	4601	92%	99%
Phoenix	909	708	1006	90%	70%
Seattle	4078	4631	4347	94%	107%
Tulsa	3854	3407	3571	108%	95%

Weekly Gas Weighted Degree Days and Gas Storage Summary

Week Ending*	Weekly HDD+0.65*CDD Totals			Gas Storage Levels (BCF)			Gas Storage Build/Draw		
	This Year	Last Year	5yr Avg	This Year	Last Year	5yr Avg	This Year	Last Year	5yr Avg
2/26/2010	189	188	187	1737	1808	1716	-116	-101	-124
3/5/2010	174	189	176	1626	1697	1607	-111	-111	-109
3/12/2010	124	128	149	1615	1655	1542	-11	-42	-65
3/19/2010	105	126	138	1626	1654	1505	11	-1	-37
3/26/2010	106	122	132	1638	1654	1478	12	0	-27
4/2/2010	91	118	105	1669	1671	1489	31	17	11
4/9/2010	66	117	111	1756	1692	1510	87	21	21
4/16/2010	62	111	95	1829	1734	1543	73	42	33
4/23/2010	77	80	68	1912	1811	1609	83	77	66
4/30/2010	75	65	75	NA	1898	1680	NA	87	71
5/7/2010	55	68	69	NA	1992	1764	NA	94	84
5/14/2010	79	72	65	NA	2092	1857	NA	100	93

Eastern Consuming Region Gas Weighted Degree Day and Gas Storage Summary

Week Ending*	Total Degree Day Information			Gas Storage Levels (BCF)			Gas Storage Build (BCF)		
	This Year	Last Year	5yr Avg	This Year	Last Year	5yr Avg	This Year	Last Year	5yr Avg
3/26/2010	120	151	162	753	644	664	-7	-22	-32
4/2/2010	107	139	119	750	646	663	-3	2	-1
4/9/2010	61	140	131	795	650	669	45	4	6
4/16/2010	70	138	112	829	666	683	34	16	14
4/23/2010	91	95	70	867	704	721	38	38	38
4/30/2010	86	59	83	NA	760	763	NA	56	42
5/7/2010	54	65	72	NA	819	813	NA	59	50
5/14/2010	82	66	64	NA	883	872	NA	64	59

Western Consuming Region Gas Weighted Degree Day and Gas Storage Summary

Week Ending*	Total Degree Day Information			Gas Storage Levels (BCF)			Gas Storage Build (BCF)		
	This Year	Last Year	5yr Avg	This Year	Last Year	5yr Avg	This Year	Last Year	5yr Avg
3/26/2010	85	92	98	289	282	226	4	2	-2
4/2/2010	75	102	94	292	283	227	3	1	1
4/9/2010	88	95	89	296	287	231	4	4	4
4/16/2010	68	83	77	304	293	236	8	6	5
4/23/2010	65	66	70	318	306	244	14	13	8
4/30/2010	68	79	70	NA	317	253	NA	11	9
5/7/2010	66	61	60	NA	330	265	NA	13	12
5/14/2010	67	65	59	NA	343	278	NA	13	13

Producing Region Gas Weighted Degree Day and Gas Storage Summary

Week Ending*	Total Degree Day Information			Gas Storage Levels (BCF)			Gas Storage Build (BCF)		
	This Year	Last Year	5yr Avg	This Year	Last Year	5yr Avg	This Year	Last Year	5yr Avg
3/26/2010	92	46	70	596	728	588	15	21	7
4/2/2010	47	79	58	627	742	599	31	14	11
4/9/2010	43	71	62	665	754	610	38	12	11
4/16/2010	21	55	53	696	776	624	31	22	14
4/23/2010	41	36	34	727	801	644	31	25	20
4/30/2010	38	38	42	NA	821	663	NA	20	19
5/7/2010	40	52	45	NA	843	685	NA	22	22
5/14/2010	50	54	42	NA	867	707	NA	24	22

* Weekly DD totals are an average of the week ending Thursday total and the week ending Friday total.

Eastern DD totals=HDDs+0.65*CDDs, Western DD totals=HDDs+0.7*CDDs, Producing DD totals=HDDs+0.5*CDDs

Weekly Degree Day and DOE Storage Number Comparison Charts

Week Ending	Gas Wtd Tot DDs	Storage Number	Holiday Week?
4/30/2010	75	NA	No
7/31/2009	75	66	No
8/11/2006	75	37	No
7/25/2008	75	65	No
8/8/2008	75	50	No
5/16/2008	75	85	No
7/14/2006	75	59	No
8/21/2009	76	54	No
10/13/2006	76	53	Yes
8/7/2009	74	63	No
8/3/2007	73	42	No
7/18/2008	73	84	No
8/10/2007	77	21	No
Average	75	57 (56*)	w/holidays
Average	75	57 (57*)	wo/holidays
Avg Best	75	65	w/ bias corr

Week Ending	Gas Wtd Tot DDs	Storage Number	Holiday Week?
5/7/2010	55	NA	No
9/11/2009	55	66	Yes
9/15/2006	54	93	No
5/4/2007	54	96	No
9/25/2009	54	64	No
9/28/2007	56	57	No
5/11/2007	54	95	No
10/5/2007	54	73	No
9/8/2006	54	108	Yes
6/5/2009	57	106	No
5/22/2009	53	106	No
6/2/2006	57	77	Yes
6/8/2007	57	92	No
Average	55	86 (86*)	w/holidays
Average	55	87 (87*)	wo/holidays
Avg Best	55	93	w/ bias corr

* Indicates adjusted EIA number to account for difference between average DDs and obs/fcst DDs.

Avg Best excludes weeks that: are more than 3 years ago, have a degree day difference of ≥ 7 , are a holiday week if week in question is not, and are bias corrected with the 3 week avg error.

Week Ending	Gas Wtd Tot DDs	Storage Number	Holiday Week?
5/14/2010	79	NA	No
8/17/2007	80	23	No
5/23/2008	80	87	No
4/28/2006	80	53	No
4/24/2009	78	82	No
7/17/2009	77	66	No
8/1/2008	77	56	No
8/10/2007	77	21	No
7/28/2006	81	19	No
10/13/2006	76	53	Yes
8/21/2009	76	54	No
8/4/2006	82	-12	No
10/9/2009	82	58	No
Average	79	47 (46*)	w/holidays
Average	79	46 (46*)	wo/holidays
Avg Best	78	62	w/ bias corr

The above charts compare the weekly total gas weighted degree days for last week, this week, and next week to the 12 weeks during the past 5 years that had the most similar gas weighted degree day totals. If a federal holiday occurred during a given week, it is marked as "Yes", otherwise as "No". Two averages of the gas weighted degree days and EIA storage numbers are presented. One that averages all 12 of the closest matches, and one that only averages weeks that did not have a holiday. The "Adjusted EIA number" presents a storage number value that is adjusted based on the difference between the observed or projected degree day value for the highlighted week, and the average degree day total for all similar weeks. So, if the week ending 3/6/2009 saw 185 total degree days and the average of all similar weeks was 184 total degree days, the average EIA number would be adjusted slightly lower to account for the difference in degree day totals between the week in question and the average of similar weeks. **NOTE: these EIA average values should not be used as a direct forecast, but just as a weather-based estimate. The average EIA values are just averages of similar weeks, and no attempt is made to adjust for supply/demand differences, or other factors.**

Daily Regional and U.S. Degree Day Totals

	Date	Eastern GW			Western GW			Producing GW			Total U.S. GW			OW	Total U.S. PW		
		HDD	CDD	Cmb	HDD	CDD	Cmb	HDD	CDD	Cmb	HDD	CDD	Cmb	HDD	HDD	CDD	Cmb
Observed	4/26/2010	10.5	3.5	12.7	7.9	2.5	9.6	5.9	3.1	7.4	9.1	3.0	11.1	11.3	7.7	1.4	8.7
	4/27/2010	15.4	3.1	17.4	9.1	3.1	11.2	6.7	1.4	7.4	12.4	2.5	14.0	16.4	10.9	1.0	11.6
	4/28/2010	15.6	2.3	17.1	8.4	2.6	10.2	3.3	1.2	3.9	12.0	1.9	13.2	17.7	11.2	0.8	11.7
	4/29/2010	8.1	2.4	9.7	10.3	0.1	10.4	0.8	7.0	4.3	7.6	3.4	9.8	10.2	7.3	1.6	8.4
	4/30/2010	0.8	5.1	4.1	9.2	0.0	9.2	2.0	9.3	6.6	3.2	5.2	6.6	3.15	3.0	3.3	5.3
	5/1/2010	0.6	9.3	6.6	8.9	0.5	9.2	3.2	8.9	7.6	3.1	6.6	7.4	1.25	2.6	4.9	6.1
	5/2/2010	0.8	12.5	9.0	8.0	1.2	8.9	1.7	7.2	5.3	2.8	7.3	7.5	0.75	2.4	6.4	7.0
	5/3/2010	1.2	11.3	8.5	7.0	2.0	8.4	2.7	6.1	5.8	3.0	6.8	7.4	0.96	2.3	5.3	6.1
	5/4/2010	0.9	9.5	7.1	5.7	3.0	7.7	0.2	6.4	3.4	2.1	6.4	6.3	1.53	2.0	4.3	5.1
	5/5/2010	0.9	8.4	6.4	8.4	3.8	11.0	0.2	8.2	4.3	2.7	7.1	7.3	1.38	2.6	4.4	5.7
Forecast	5/6/2010	3.7	9.1	9.6	8.4	3.4	10.8	0.4	11.7	6.3	4.5	8.5	10.0	2.5	3.7	5.3	7.4
	5/7/2010	5.3	6.6	9.6	9.4	3.4	11.8	2.1	11.2	7.7	5.9	7.4	10.7	4.92	4.8	4.2	7.8
	5/8/2010	9.3	5.9	13.2	8.7	3.7	11.3	5.3	7.6	9.1	8.5	5.9	12.3	6.06	6.6	2.9	8.8
	5/9/2010	13.7	4.8	16.9	8.2	3.3	10.5	3.1	8.0	7.0	10.7	5.5	14.3	13.4	9.4	2.1	10.9
	5/10/2010	12.6	4.1	15.3	8.5	1.6	9.6	1.3	11.8	7.2	10.0	6.2	14.0	14	8.9	2.3	10.6
	5/11/2010	8.0	4.6	10.9	8.6	1.1	9.4	0.8	13.1	7.3	7.1	6.7	11.5	10.8	6.4	2.8	8.4
	5/12/2010	4.8	5.1	8.1	7.6	1.7	8.7	0.9	11.0	6.4	4.9	6.3	9.0	7.26	4.4	3.2	6.7
	5/13/2010	4.7	5.9	8.6	5.7	3.4	8.1	1.5	9.0	6.0	4.5	6.4	8.7	5.77	3.8	3.5	6.3
	5/14/2010	5.1	5.7	8.8	4.6	4.9	8.1	2.8	6.6	6.0	4.6	5.8	8.4	4.47	3.7	3.2	6.0
	5/15/2010	5.3	5.4	8.8	3.5	5.4	7.3	2.6	5.3	5.2	4.5	5.3	7.9	3.8	3.5	2.8	5.5
	5/16/2010	5.3	5.3	8.8	2.8	5.8	6.8	1.5	4.7	3.8	4.1	5.3	7.5	4.35	3.4	2.6	5.3
	5/17/2010	4.9	4.9	8.1	2.4	5.2	6.0	0.6	5.7	3.4	3.6	5.3	7.0	5.4	3.2	2.5	5.0
	5/18/2010	3.6	4.7	6.6	2.3	4.2	5.3	0.4	7.6	4.2	2.8	5.6	6.4	4.45	2.6	2.5	4.4
	5/19/2010	1.9	4.9	5.1	2.4	4.1	5.2	0.4	9.2	5.0	1.8	6.1	5.8	2.7	1.7	3.0	3.9
	5/20/2010	1.1	5.7	4.8	2.5	4.9	5.9	0.3	10.1	5.3	1.4	7.1	6.0	1.8	1.2	3.7	3.9

For More Information Contact

Stephen Strum
 Frontier Weather, Inc
 918-252-7791
sstrum@frontierweather.com
<http://www.frontierweather.com>

© 2010 Frontier Weather, Inc. All rights reserved. Any unauthorized reproduction, distribution or disclosure is prohibited and may result in account termination and/or prosecution. Information contained in this report is intended solely for use by the recipient and may not be further distributed without written approval from Frontier Weather, Inc.

Users of this report agree to the following:

THE REPORT is provided by FRONTIER WEATHER, INC "AS IS", and "AS AVAILABLE" WITHOUT WARRANTY OF ANY KIND TO USER OR ANY THIRD PARTY, INCLUDING, BUT NOT LIMITED TO, ANY EXPRESS OR IMPLIED WARRANTIES OF MERCHANTABILITY OF THE REPORT; ACCURACY OF INFORMATIONAL CONTENT; NON-INFRINGEMENT; QUIET ENJOYMENT; AND TITLE. FRONTIER WEATHER, INC. SHALL NOT BE LIABLE FOR ANY LOSS, INJURY, CLAIM, LIABILITY OR DAMAGE OF ANY KIND RESULTING IN ANY WAY FROM THE USE OF THIS INFORMATION. THE USER FURTHER AGREES THAT FRONTIER WEATHER, INC. SHALL NOT BE LIABLE TO USER OR ANY THIRD PARTY FOR ANY LOSS OF PROFITS, LOSS OF USE, INTERRUPTION OF BUSINESS, OR ANY DIRECT, INDIRECT, SPECIAL, EXEMPLARY, INCIDENTAL OR CONSEQUENTIAL DAMAGES OF ANY KIND WHETHER UNDER THIS AGREEMENT OR OTHERWISE, EVEN IF FRONTIER WEATHER, INC. WAS ADVISED OF THE POSSIBILITY OF SUCH DAMAGES OR WAS GROSSLY NEGLIGENT. In any event, FRONTIER WEATHER, INC. shall never be liable for any amount in excess of the fees paid by the USER to FRONTIER WEATHER, INC. hereby. Additionally, FRONTIER WEATHER, INC. makes no warranty that the information provided in this report will be free from errors or omissions, or defects, human or mechanical.