

Forecast Discussion

There remain two areas of interest in the tropics this morning, 91L in the eastern Atlantic and 92L just east of Florida. In the eastern Atlantic, 91L is slowly becoming better organized, and odds are increasing that the area of low pressure will become a tropical depression or storm during the next couple of days. This eventual storm is not expected to be a long-term threat to the U.S. though as it will be heading northwestward and eventually northward over the central Atlantic, well away from any land areas. Of more concern for the Gulf and U.S. is 92L located over the northern Bahamas. This area of low pressure only has a slight chance to develop prior to drifting across Florida tomorrow. Once the low moves into the Gulf it will also only have a slight chance to develop, and most model guidance does not have the low reaching tropical storm strength. However, since the low does have the potential to track across or near a large portion of the production area it will need to be monitored closely over the next few day as it tracks westward.

Season Storm Summary

Type	Forecast	Average	So Far
Named Storms	9-11	12	4
Hurricanes	4-5	6	3

Storm Names for the 2014 Season

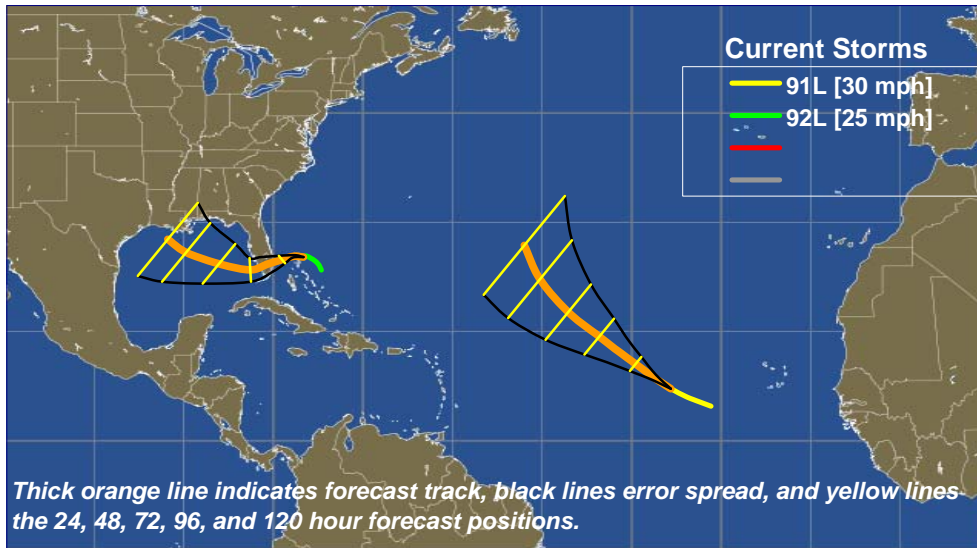
Arthur	Gonzalo	Marco	Teddy
Bertha	Hanna	Nana	Vicky
Cristobal	Isaias	Omar	Wilfred
Dolly	Josephine	Paulette	
Edouard	Kyle	Rene	
Fay	Laura	Sally	

Saffir-Simpson Hurricane Wind Scale

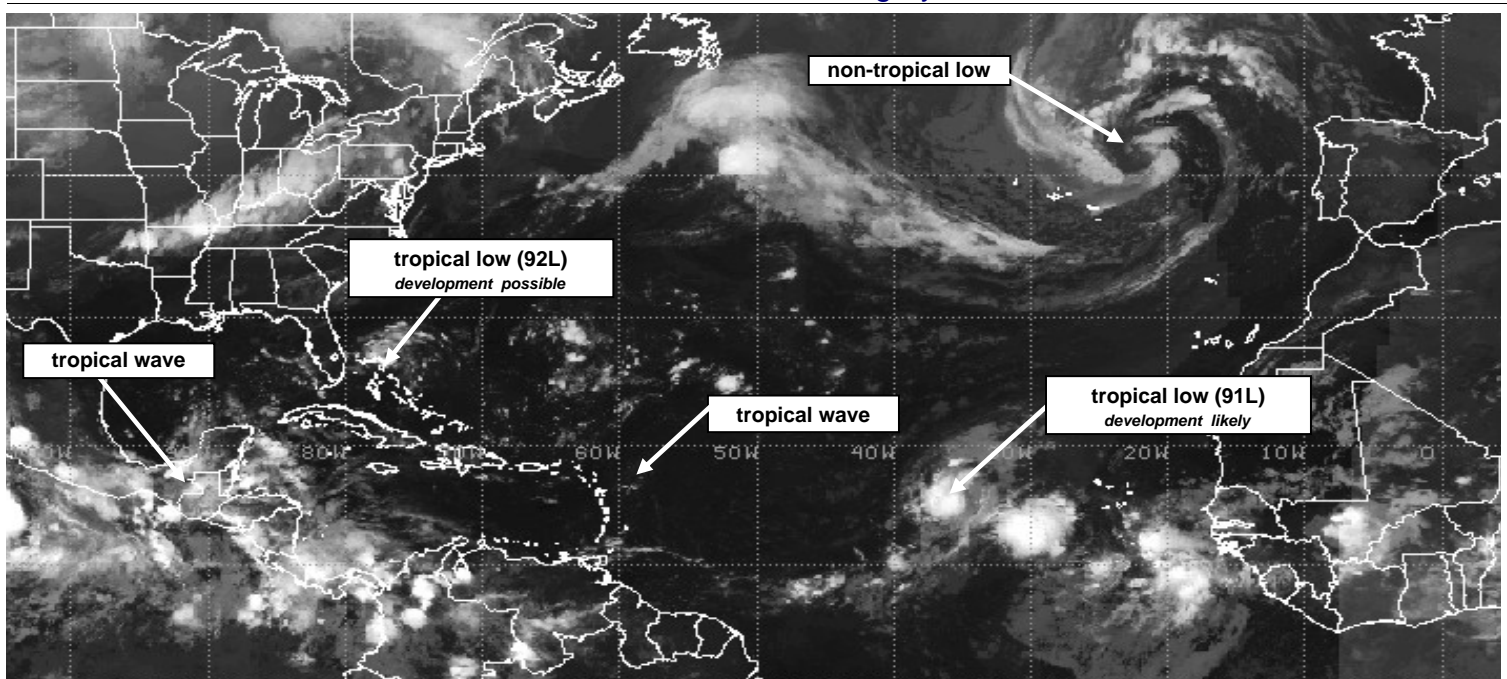
Type	Winds
Tropical Depression	< 39mph
Tropical Storm	39-73 mph
Category 1 Hurricane	74-95 mph
Category 2 Hurricane	96-110 mph
Category 3 Hurricane	111-129 mph
Category 4 Hurricane	130-156 mph
Category 5 Hurricane	> 156 mph

Normal Storm Distribution by Month

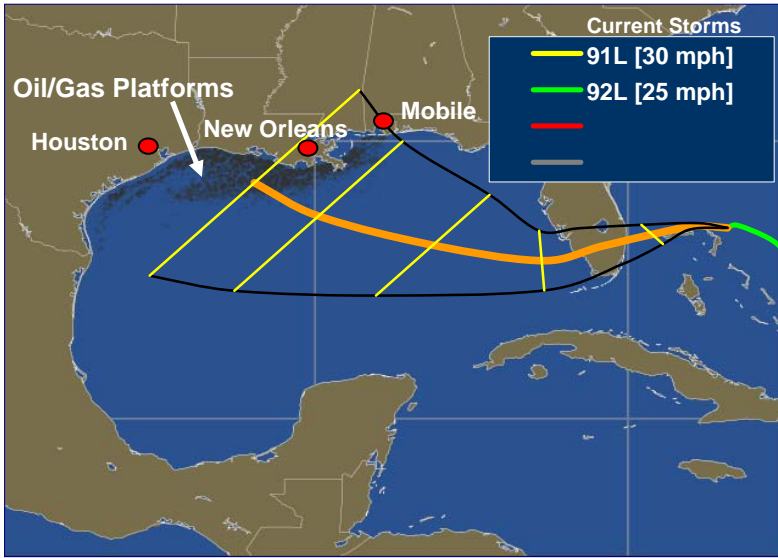
Month	Historical Average		2014	
	Storms	Hurr.	Storms	Hurr.
June	< 1	< 1	0	0
July	1	< 1	1	1
August	3	2	2	2
September	3	2	1	0
October	2	1		
November	< 1	< 1		



Current Satellite Imagery



Gulf of Mexico Focus



Gulf Oil/Gas Platform Threat Summary

Threat information for storm:	92L	Number	Percent
Platforms within 15 miles of storm track:		358	5.1%
Platforms within 50 miles of storm track:		2434	34.4%
Platforms within 150 miles of storm track:		6457	91.3%

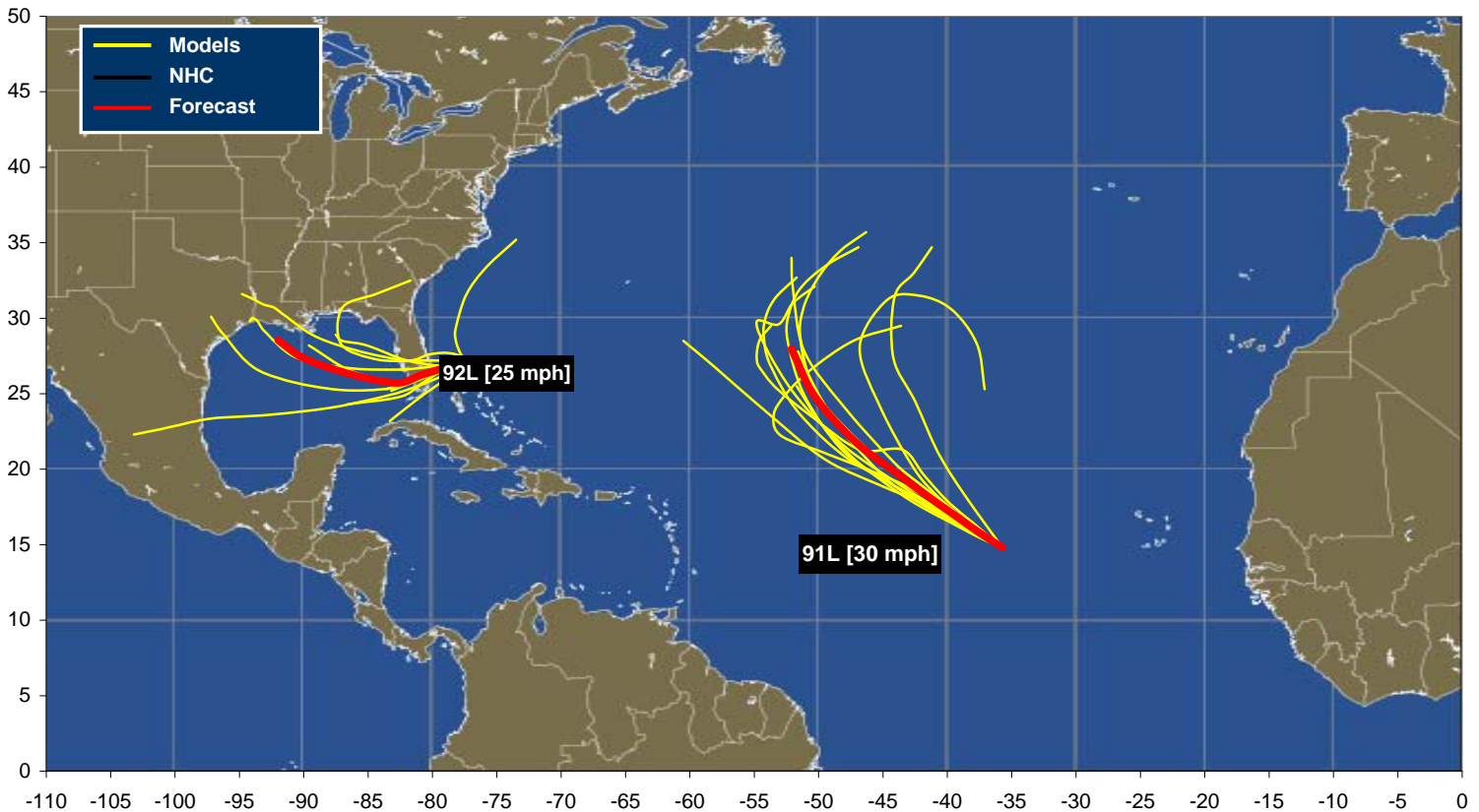
The 15, 50, and 150 mile distances approximate the extent of the eyewall, hurricane force winds, and tropical storm force winds for an average storm.

Shut-in Statistics

Statistics as of: 9/10/2014	Num	%	Change
Manned Platforms Evacuated:	0	-	0.00%
Rigs Evacuated:	0	-	0.00%
Oil, BOPD Shut-in:	0	-	0.00%
Natural Gas, BCF/D Shut-in:	0	-	0.00%

Data from BSEE, Department Of the Interior.

Atlantic Basin Forecast Model Tracks



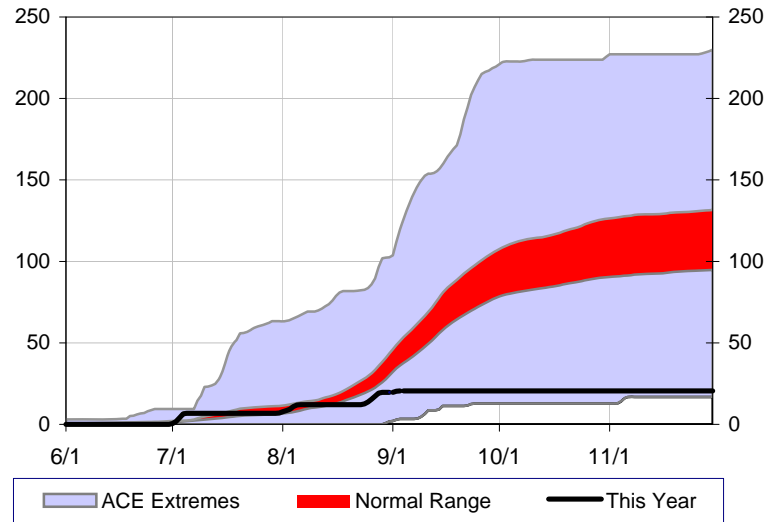
Season Climatology

Historical Tropical Storm Locations of Origin



Points on the map above show where a tropical storm was first named during the 7-day window centered on today in the period 1951-2013.

ACE To-Date



Season-To-Date Statistics

Current Year + Last 5 Years

Season-to-date	2014	2013	2012	2011	2010	2009	5-yr avg
Named Storms	4	8	14	15	9	6	10.4
Hurricanes	3	1	7	3	3	2	3.2
ACE	20.48	13.35	79.69	70.96	67.97	40.75	54.5

Analogue Years

	2009	2006	2002	1997	1994	avg
Named Storms	6	8	7	6	4	6.2
Hurricanes	2	2	1	3	1	1.8
ACE	40.75	24.02	12.8	33.63	11.3	24.5

Long-Term Averages

	1995-2013	1971-2013
Named Storms	8.8	7.2
Hurricanes	3.7	3.3
ACE	69.2	49.5

Final Totals	2014	2013	2012	2011	2010	2009	5-yr avg
Named Storms		14	19	19	19	9	16.0
Hurricanes		2	10	7	12	3	6.8
ACE		29.53	130.9	125.1	167.5	52.58	101.1

	2009	2006	2002	1997	1994	avg
Named Storms	9	10	12	8	7	9.2
Hurricanes	3	5	4	3	3	3.6
ACE	52.58	78.54	65.13	40.12	31.5	53.6

	1995-2013	1971-2013
Named Storms	15.2	12.1
Hurricanes	7.7	6.3
ACE	133.0	95.6

All Storm Tracks from This Year

